



Vulnerabilities multiply

As inequality increases, so does the risk of experiencing one or more 'vulnerability'



Data from Bradford and Craven CCG shows life expectancy, (and healthy life expectancy) decreasing rapidly, from Bradford's least to most deprived places.

A child growing up in Manningham is more likely to experience poor health/poor household health

IMD measure (2015)	Wharfedale	Manningham
Overall (IMD)	10% least deprived	10% most deprived
Employment	10% least deprived	10% most deprived
Income	10% least deprived	10% most deprived
Health and disability	10% least deprived	10% most deprived
Education, skills & training	10% least deprived	10% most deprived
Living environment	Mid-range (20-80)	10% most deprived
Crime	10% least deprived	Mid-range (20-80)

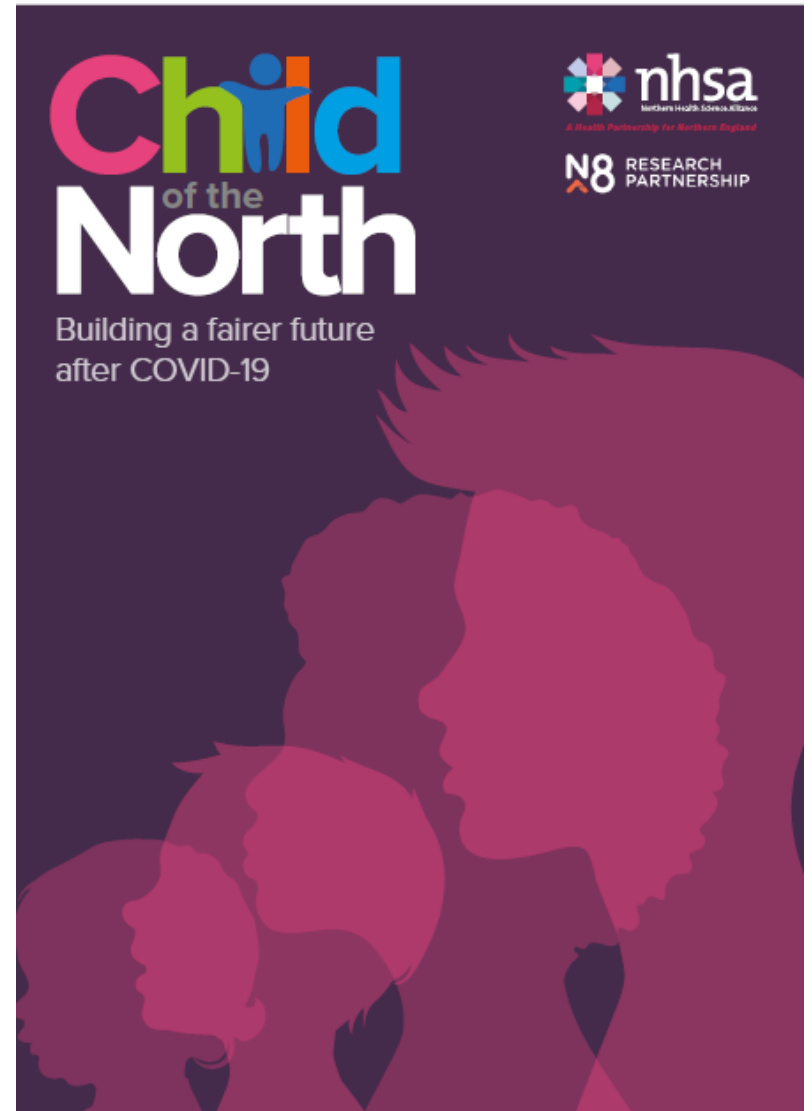
A child growing up in Manningham is also more likely to experience household unemployment, low income, poor quality housing, crime, and will find it harder to access a good school.

The problem

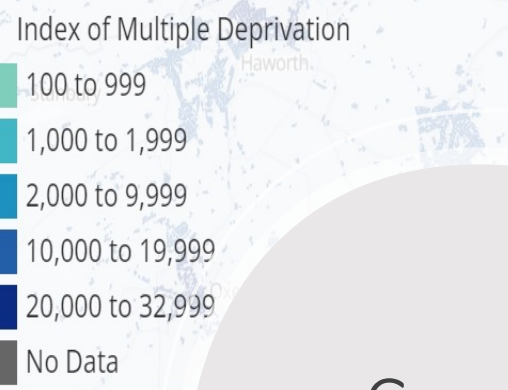


Centre for Applied
Education Research

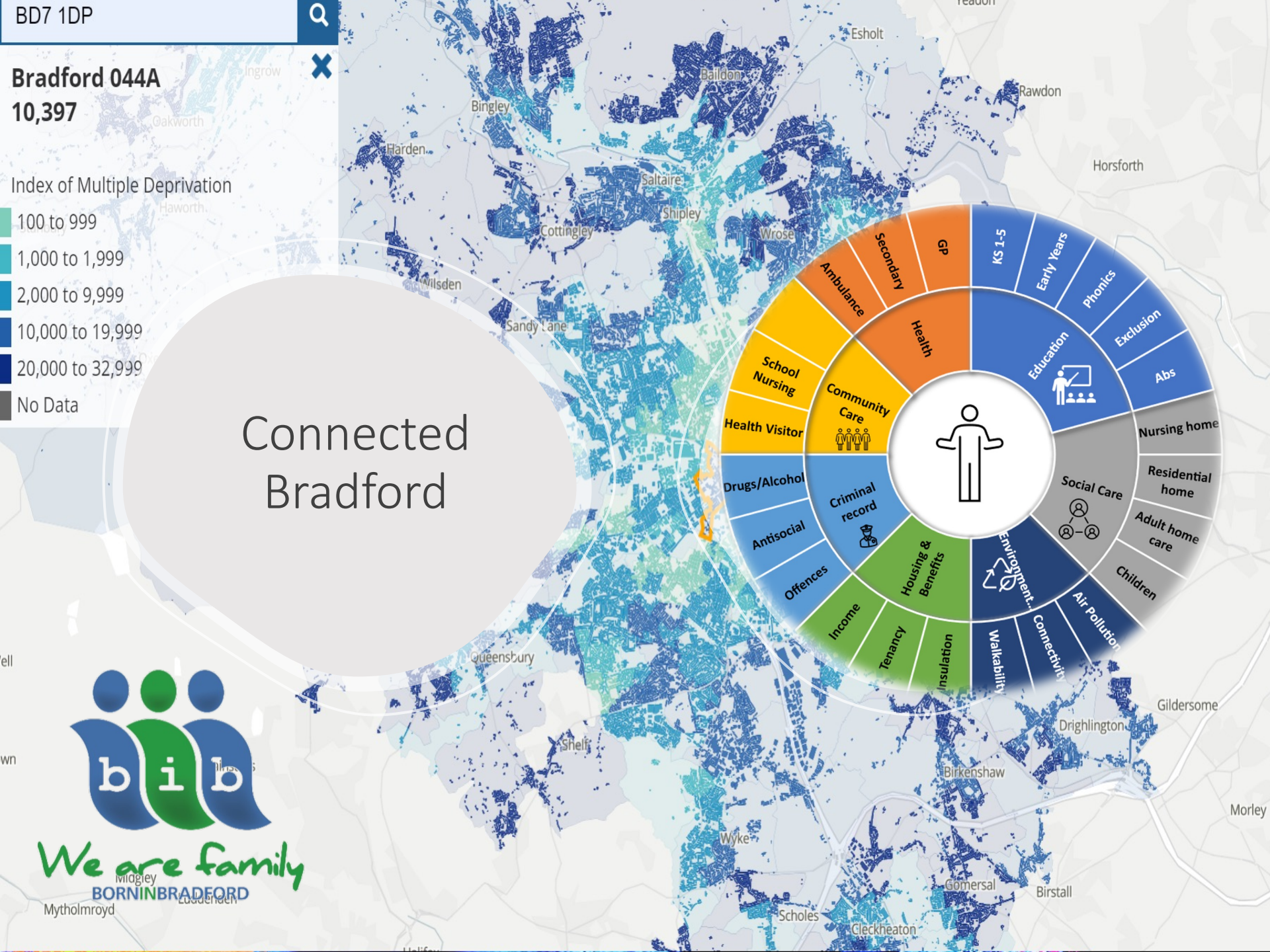
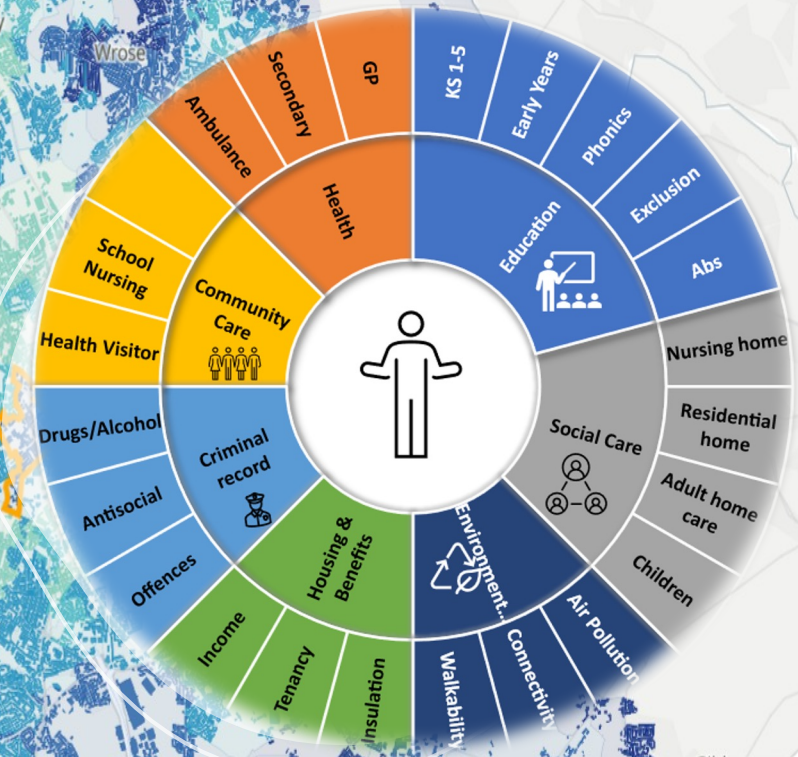
Fragmented systems



Bradford 044A
10,397



Connected
Bradford



Born in Bradford

Everyone's life is a jump in the air;
Ten short years and these children grow
Like the springtime flowers in a Bradford park.
Everyone's life defies gravity;
Morning sunrise to evening's glow
A bounce in the light not a trip in the dark.
It's a decade reaching for the sky
With each year a leap year: watch them fly!

Ian McMillan (poet in residence)



LINC

Lifespan multimorbidity
research collaborative

Expertise in analysis

- UK and Denmark
- Large population-based cohorts
- Longitudinal data
- Genomic data

Deliverable impacts

- Early interventions for disease prevention
- Reduced health inequalities

Early identification

Targeted support to prevent multimorbidity development

Diversity

Addressing health inequalities based on ethnicity and socio-economic position.

Rich information

Health, risk and protective factors, and genomic data across cohorts

Unique resource

Five large longitudinal population-based cohorts covering the lifespan



N = 754,938

Autism inequalities



Centre for Applied Education Research

Original Article



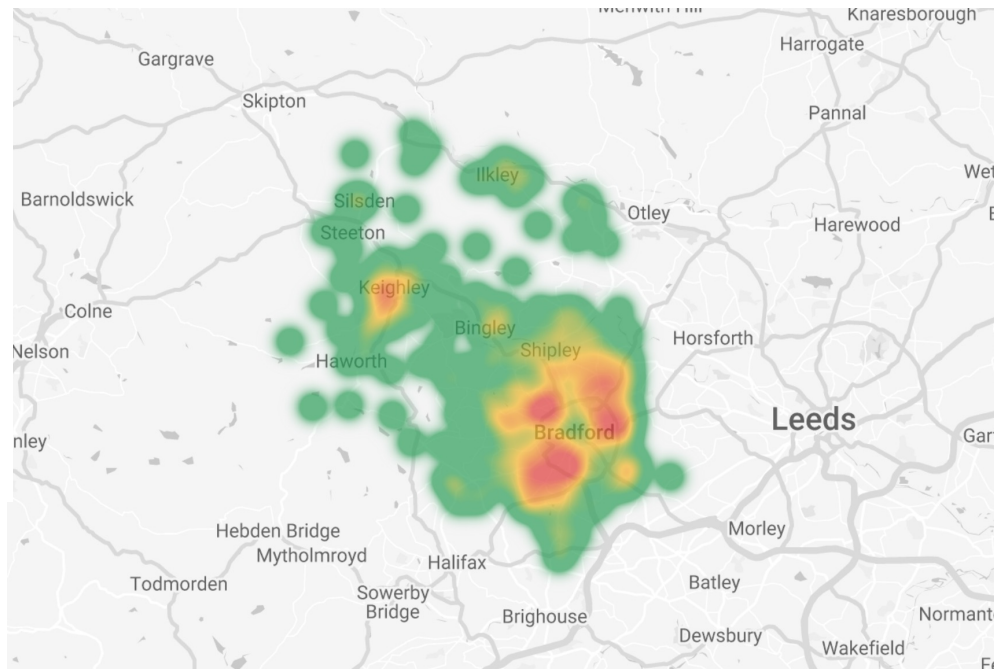
The association between socioeconomic status and autism diagnosis in the United Kingdom for children aged 5–8 years of age: Findings from the Born in Bradford cohort

Autism
1–10
© The Author(s) 2017
Reprints and permissions:
sagepub.co.uk/journalsPermissions.nav
DOI: 10.1177/1362361317733182
journals.sagepub.com/home/aut
SAGE

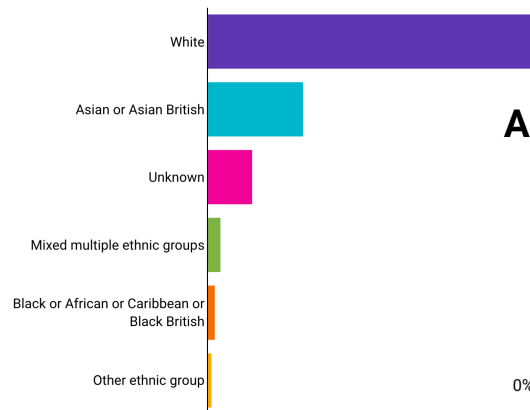
Brian Kelly¹, Stefan Williams^{1,2}, Sylvie Collins¹, Faisal Mushtaq³, Mark Mon-Williams³, Barry Wright⁴, Dan Mason¹ and John Wright¹

Abstract

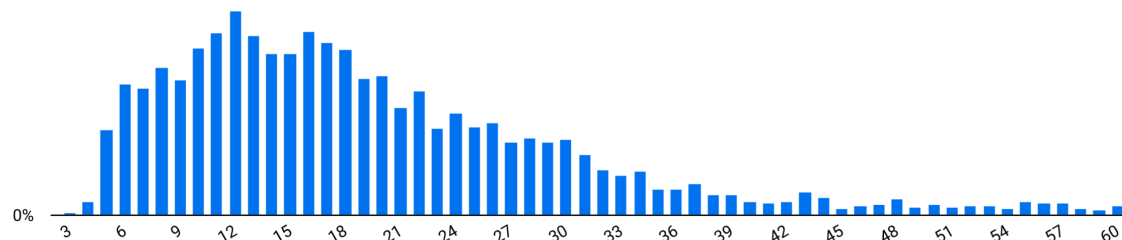
There has been recent interest in the relationship between socioeconomic status and the diagnosis of autism in children. Studies in the United States have found lower rates of autism diagnosis associated with lower socioeconomic status, while studies in other countries report no association, or the opposite. This article aims to contribute to the understanding of this relationship in the United Kingdom. Using data from the Born in Bradford cohort, comprising 13,857 children born



Ethnicity:



Age:



EYFSP risk of autism



Centre for Applied
Education Research

The Early Years Foundation Stage Profile can identify children at risk of **autism**

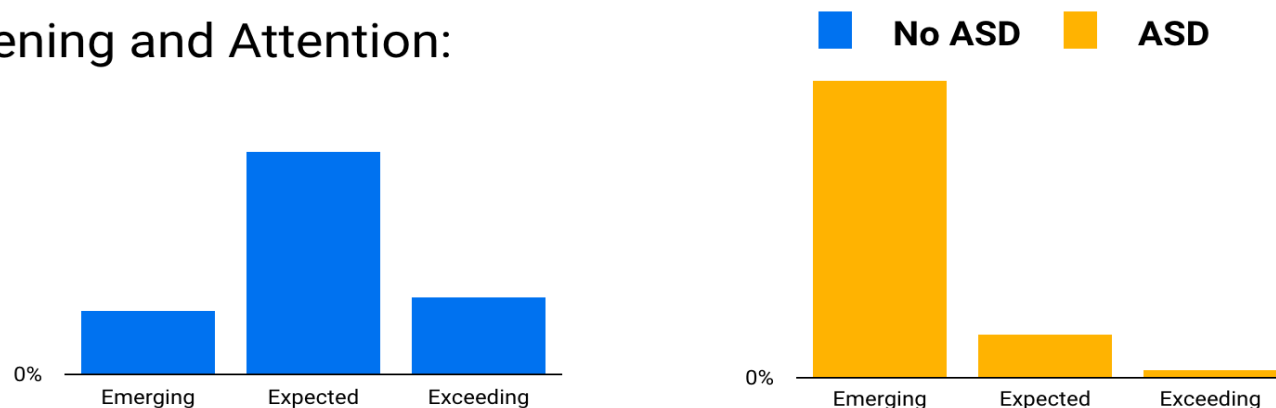
Open access

Original research

BMJ
Paediatrics
Open

Investigating the association between early years foundation stage profile scores and subsequent diagnosis of an autism spectrum disorder: a retrospective study of linked healthcare and education data

Listening and Attention:

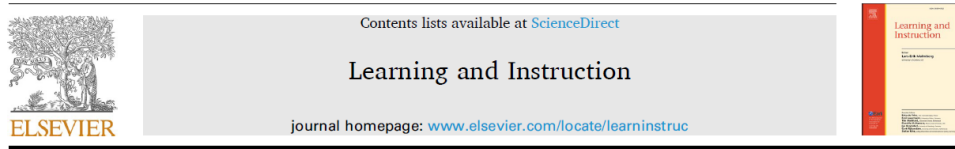


EYFSP risk of SEN



Centre for Applied
Education Research

The Early Years Foundation Stage Profile can identify children at risk of SEN



Can holistic school readiness evaluations predict academic achievement and special educational needs status? Evidence from the Early Years Foundation Stage Profile

A.L. Atkinson^{a,b,*}, L.J.B. Hill^c, K.J. Pettinger^a, J. Wright^a, A.R. Hart^d, J. Dickerson^a, M. Mon-Williams^{a,c,e}

^a Bradford Institute for Health Research, Bradford, West Yorkshire, UK

^b School of Languages, Cultures and Societies, University of Leeds, Leeds, UK

^c School of Psychology, University of Leeds, Leeds, UK

^d Department of Paediatric Neurology, Sheffield Children's Hospital NHS Foundation Trust, Ryegate Children's Centre, Tupton Crescent Road, Sheffield, UK

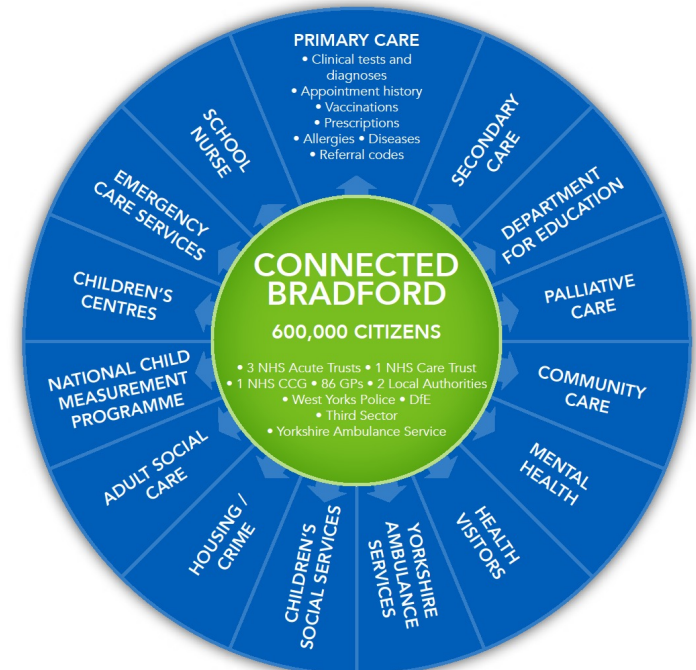
^e National Centre for Optics, Vision and Eye Care, University of South-Eastern Norway, Kongsberg, Hasbergvei 36, 3616, Norway

ARTICLE INFO

Keywords:
Educational attainment
Special educational needs
School readiness
Primary education

ABSTRACT

This study examined the predictive validity of holistic school readiness evaluations using the 'good level of development' outcome from the Early Years Foundation Stage Profile (EYFSP). The EYFSP assesses a range of abilities at school entry including academic, language, socio-emotional, and motor skills. In particular, we examined whether the assessment predicted reading, writing, maths, and science ability two years later and future special educational needs (SEN) status ($N = 3739-5768$). Children who reached a good level of development had higher odds of performing at expected (vs. below expected) levels on later academic assessments. This was particularly true for children with SEN. Reaching a good level of development also increased the odds of performing at above expected (vs. expected) levels on the academic assessments and lowered the odds of requiring SEN support. This demonstrates that holistic school readiness evaluations are powerful tools that can identify 'at risk' children.



DATA 1



Digitally Acting Together As One

The Early Years Foundation Stage



Think Family Database
Family Detail
Insight Bristol
Integrated analytics hub

Change Family Selection?
Lead professional: Claire Mackey

Name	Criteria	
01/01/2015 (5 Years)		
20/01/2014 (6 Years) Relationships...	SUPPORT	SCHOOL INCOME
20/01/2014 (6 Years)		
30/04/2012 (7 Years) Relationships...		INCOME
13/05/2008 (11 Years) Relationships...	SUPPORT	SCHOOL INCOME
07/10/2006 (13 Years) Relationships...	CRIME ASB SUPPORT MISSING INCOME DA HEALTH	

Family Indicators

Increasing

Address:

Other Addresses

- Bristol Foyer 2A Victoria Street Bristol BS1 6DT (East Central)
- 1 St Lukes Mews Bristol BS4 4RL (South)
- Flat 5A Bristol Foyer 2A Victoria Street Bristol BS1 6DT (East Central)
- 21 Stone Hodges Gloucester Road Bishopston Bristol BS7 8NH (North)
- Flat 9B Bristol Foyer 2A Victoria Street Bristol BS1 6DT (East Central)
- 71 Brighton Crescent Bristol BS3 3PP (South)



