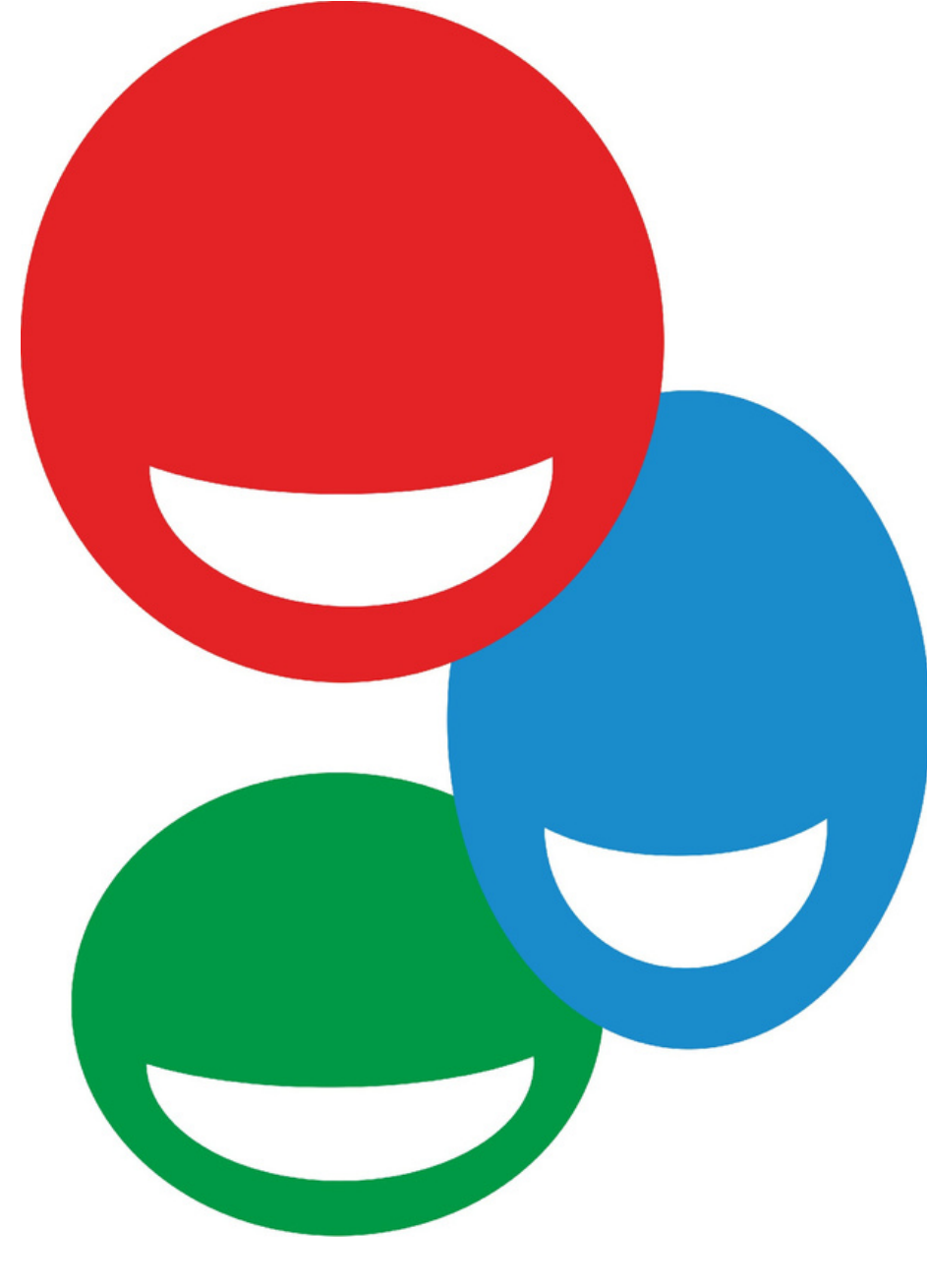




UNIVERSITY OF LEEDS



**BRADFORD  
SMILE  
STUDY**

## Why is this study important?



It will help us understand why some children need braces when they are older and others don't.



## What will be included in the study?



Dental examination



Photos of the face



Photos of the mouth



Dental moulds



Questionnaire

## Who can take part in the study?

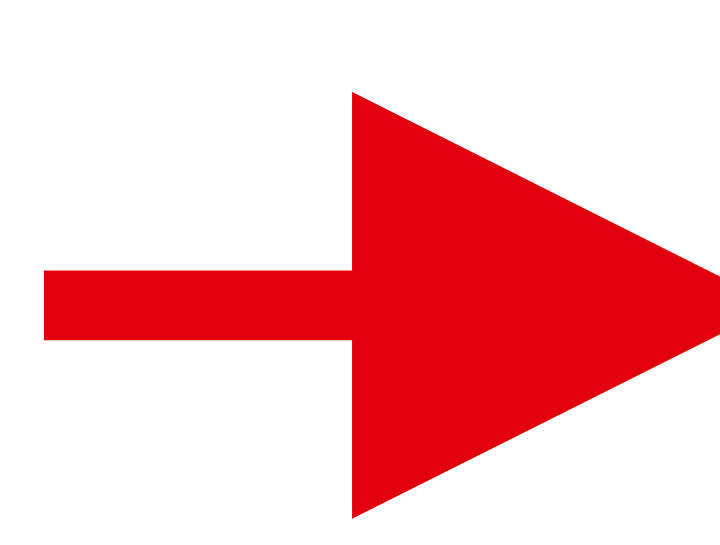
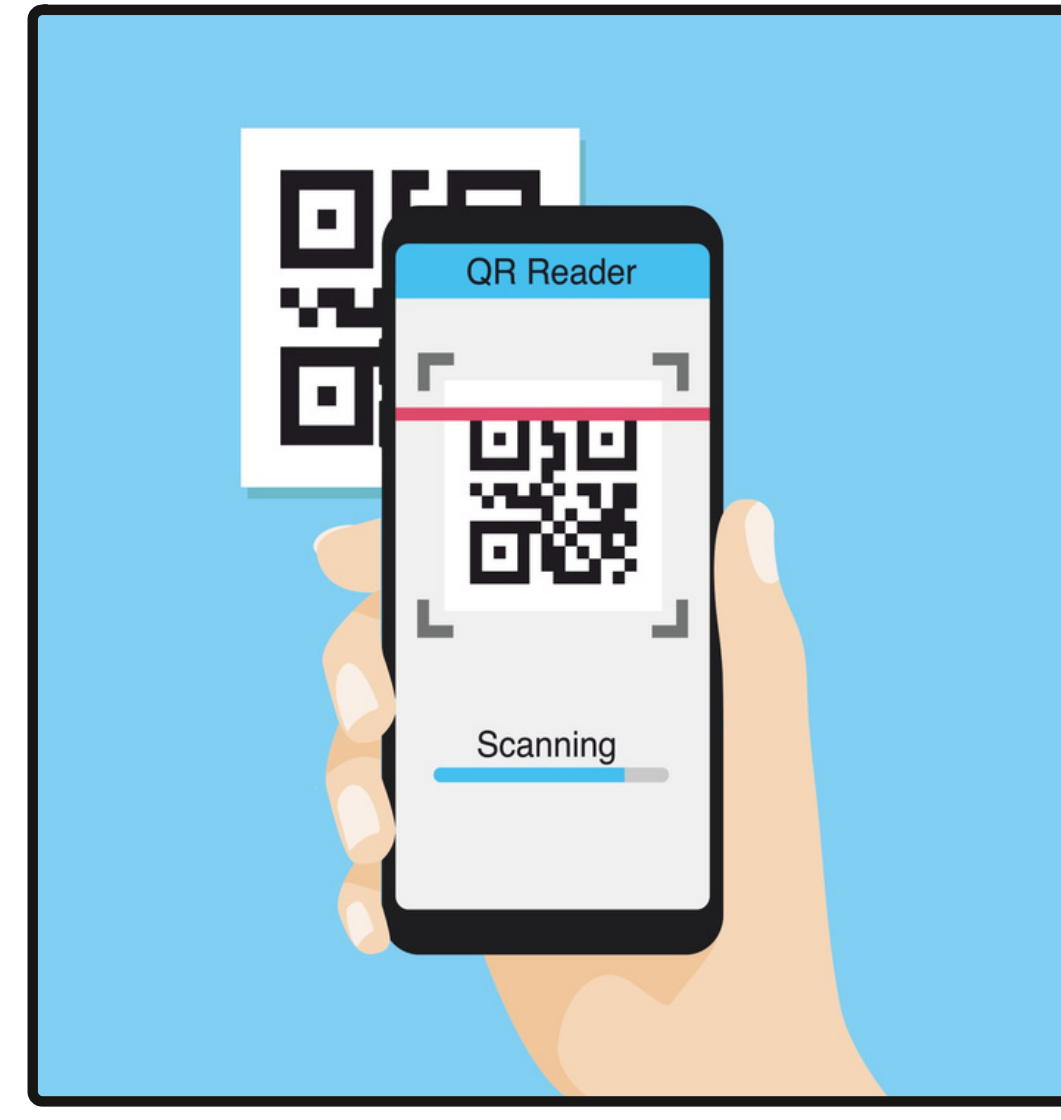
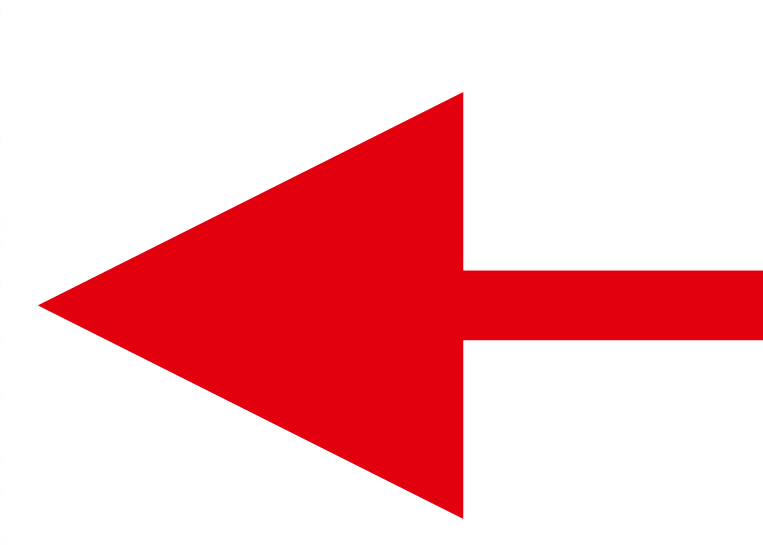
Born In Bradford (BiB) children aged 6 to 12 years old.  
Parent/Carers of the children must give their consent.

### For more information please visit:

[www.tinyurl.com/BradfordSmileStudy](http://www.tinyurl.com/BradfordSmileStudy)  
[www.tinyurl.com/BradfordSmileStudy-URDU](http://www.tinyurl.com/BradfordSmileStudy-URDU)

**Or call us on:**  
01274 383454

Scan me!



مجھے اسکین کرو!

